

AN ILLUSTRATED KEY TO THE GROSSULARIACEAE OF ALBERTA

**Compiled and written by
Lorna Allen & Linda Kershaw**

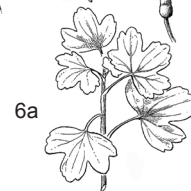
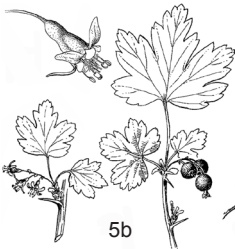
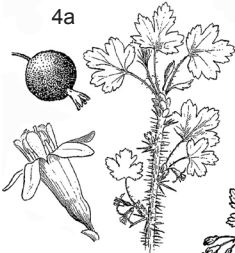
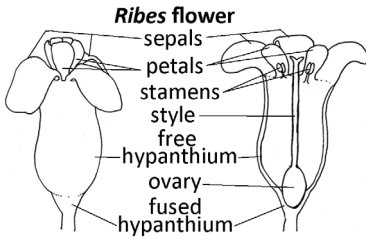
February 2018

This key was compiled using information primarily from Moss (1983), Douglas et. al. (1999) and the Flora North America Association (2008). Taxonomy follows VASCAN (Brouillet, 2015). The main references are listed at the end of the key. Please let us know if there are ways in which the key can be improved.

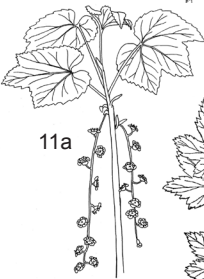
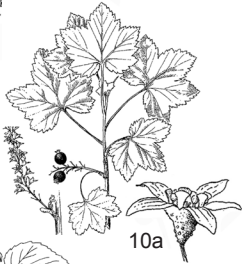
The 2015 S-ranks of rare species (S1; S1S2; S2, SU according to ACIMS, 2016) are noted in superscript (^{S1;S2;SU}) after the species names. For more details go to the ACIMS web site. No exotic species in this family are known to be naturalized in AB.

GROSSULARIACEAE Currant Family

RIBES Currants & Gooseberries (RĪ-bēz; RĒ-bes)



- 01a** Stems with spines at the joints/nodes and often bristly/prickly between joints/nodes (gooseberries) **02**
- 01b** Stems sometimes hairy, but not spiny or bristly/prickly (currants) **06**
- 02a** Flowers saucer-shaped, in spreading to drooping clusters of 7-15; reddish; flower stalks jointed just below the ovary/berry; ovaries/berries bristly with gland-tipped hairs; leaves glandless and usually hairless below, notched at the base; stems densely spiny *Ribes lacustre*
- 02b** Flowers tubular to cup-shaped, in clusters of 1-5, variously colored; flower stalks not jointed; ovary/berry without bristly glands; leaves and stems various **03**
- 03a** Styles hairless; berries densely yellowish-spiny, reddish; stems with grey and gland-tipped hairs and 0-few bristles except for 1-3 spines at the joints/nodes; flowers tubular, greenish or reddinged, in clusters of 1-3; sepals bent sharply back; leaves broadly triangular with 3-5 rounded, toothed lobes, squared to slightly notched at the base; canyons and ridges at 1300-2200 m in Wa, OR, BC and AB, AB range unknown *Ribes watsonianum* ^{SU}
- 03b** Styles hairy; berries not densely yellowish-spiny, variously colored; stems and flowers various . . **04**
- 04a** Stamens \approx petals and $<$ sepals in length; middle-upper fruiting stems usually bristly; leaves usually with gland-tipped hairs beneath and squared to slightly notched at the base *Ribes oxycanthoides*
- 04b** Stamens $>$ petals and \approx sepals in length; middle-upper fruiting stems rarely bristly; leaves without gland-tipped hairs, variously shaped at base . . **05**
- 05a** Old stems dark-colored; young stems without black, stalkless glands; leaf bases broadly wedge-shaped or sometimes squared; widespread in central AB. *Ribes hirtellum*
- 05b** Old stems whitish; young stems often with black, stalkless glands; leaf bases broadly notched or rounded; rare in sw to c AB *Ribes inerme* ^{S2?}
- 06a** Flowers golden-yellow or reddish, slightly irregular; leaves rolled in bud; s AB coulees and river valleys *Ribes aureum*
- 06b** Flowers not golden-yellow or reddish, regular; leaves folded like a fan in bud **07**



- 07a** Free part of the flower base (hypanthium) bell-shaped to tubular, longer than wide **08**
- 07b** Free part of the flower base (hypanthium) saucer-to bowl shaped, wider than long **10**
- 08a** Fruits smooth (no glands or hairs); anthers tipped with a small-holed callus; lower leaf surface dotted with stalkless amber glands; common in ec AB ***Ribes americanum***
- 08b** Fruits with stalked glands, with or without hairs; anthers tipped with cup-shaped hairs; lower leaf surfaces with stalked glands and sometimes also stalkless glands; montane species of swAB. **09**
- 09a** Berries bluish-black, 10-12 mm long; flower base (hypanthium) bell-shaped to tubular, \approx sepals in length; petals 2.5-4 mm long; leaves often thick, rough and somewhat sticky, with copious soft and gland-tipped hairs; montane woods in extreme sw AB ***Ribes viscosissimum***
- 09b** Berries red, 6-8 mm long; flower base (hypanthium) cylindrical, twice as long the sepals; petals 1-2 mm long; leaves hairless to conspicuously hairy and/or with short-stalked and often also stalkless glands; dry shrublands and open forests, widespread in sc BC but AB range unknown, probably sAB montane ***Ribes cereum***^{SU}
- 10a** Leaves dotted with stalkless resinous glands (at least beneath), often with a strong, sweet aroma that has been likened to the smell of spruce gum and cat urine ***Ribes hudsonianum***
- 10b** Leaves without stalkless resinous glands. **11**
- 11a** Ovaries/berries smooth, hairless; leaves mostly with 3 rounded lobes (some 5-lobed leaves often present) ***Ribes triste***
- 11b** Ovaries/berries bristly with stalked glands; leaves with 5-7 sharp-pointed lobes **12**
- 12a** Berries red; sepals 2-2.5 mm long, hairless on the outer/lower side; petals white to pink; bark brownish; leaves glandless, sometimes sparsely hairy; widespread, lowland. . . ***Ribes glandulosum***
- 12b** Berries blue-black; sepals 3-4 mm long, hairy on the outer/lower side; petals red to purplish; bark deep purplish-red; leaves with hairs and stalked glands; rare, subalpine ***Ribes laxiflorum***^{S2}

References

- ACIMS (Alberta Conservation Information System). 2016. List of Elements in Alberta - Vascular Plants. October 2015. Downloaded from <https://www.albertaparks.ca/albertaparksca/management-land-use/alberta-conservation-information-management-system-acims/download-data.aspx#trackedWatch>.
- Brouillet, L., F. Coursol, S.J. Meades, M. Favreau, M. Anions, P. Bélisle & P. Desmet. 2015. VASCAN, the Database of Vascular Plants of Canada. <http://data.canadensys.net/vascan/>
- Burke Museum of Natural History and Culture. <http://biology.burke.washington.edu/herbarium/> Website accessed 2016
- Douglas, George W., Del Meidinger and Jim Pojar. 1999. Illustrated flora of British Columbia. Volume 3. Dicotyledons (Diapensiaceae through Onagraceae). British Columbia Ministry of Forests, Victoria, BC.
- Flora North America Association. 2008. Flora North America Website. Online data accessed December 2015 to June 2016. <http://www.efloras.org>
- Johnson, J.D., L. Kershaw, A. MacKinnon, J. Pojar. 1995. Plants of the Western Boreal Forest and Aspen Parkland. Lone Pine Publishing, Edmonton, Alberta. 392 pp.
- Lackschewitz, K. 1991. Vascular plants of west-central Montana--identification guidebook. U.S. Forest Service Intermountain Research Station, Ogden, UT. 648 pp.
- Moss, E.H. 1983. The Flora of Alberta. Second Edition, Revised by John G. Packer. University of Toronto Press, Toronto, Ontario.

List of Species and Illustration Sources

Scientific Name	Illus. Source
<i>Ribes americanum</i>	H&C
<i>Ribes aureum</i>	H&C
<i>Ribes cereum</i>	H&C
<i>Ribes glandulosum</i>	B&B
<i>Ribes hirtellum</i>	B&B
<i>Ribes hudsonianum</i>	H&C
<i>Ribes inerme</i>	H&C
<i>Ribes lacustre</i>	H&C
<i>Ribes laxiflorum</i>	H&C
<i>Ribes oxyacanthoides</i>	H&C
<i>Ribes triste</i>	LK
<i>Ribes viscosissimum</i>	H&C
<i>Ribes watsonianum</i>	H&C

Key to Illustration Sources

B&B = Britton, N. L. and A. Brown. 1913. An illustrated flora of the northern United States and Canada. reprinted by Dover Publications in 1970 edition. Dover Publications, Inc., New York, New York.

H&C = Hitchcock, C. L., A. Cronquist, M. Ownbey, and J. W. Thompson. 1955-69. Vascular plants of the Pacific Northwest. Volume 5. University of Washington Press, Seattle, Washington.

LK = Linda Kershaw

Index

Ribes

- americanum* 3
- aureum* 2
- cereum* 3
- glandulosum* 3
- hirtellum* 2
- hudsonianum* 3
- inerme* 2
- lacustre* 2
- laxiflorum* 3
- oxyacanthoides* 2
- viscosissimum* 3
- watsonianum* 2